



# COUNTY

FORM & SUPPLY

## STAMP RENTAL CATALOG

17418 Manchester Rd, Glencoe, MO 63038

(636) 458-1613

[CountyFormAndSupply.com](http://CountyFormAndSupply.com)

STAMP #: Arizona Flagstone

Manufacturer: Proline P/N: RS300 SIZE: 52" x 36"

SET OF: 3- Red, Blue, Yellow + Floppy



STAMP: Ashlar Cut Slate

Manufacturer: Brickform

P/N: FM-3125

SIZE: 23.125" x 23.125"

SET OF: 3 (Red, Yellow, Blue) +  
Floppy



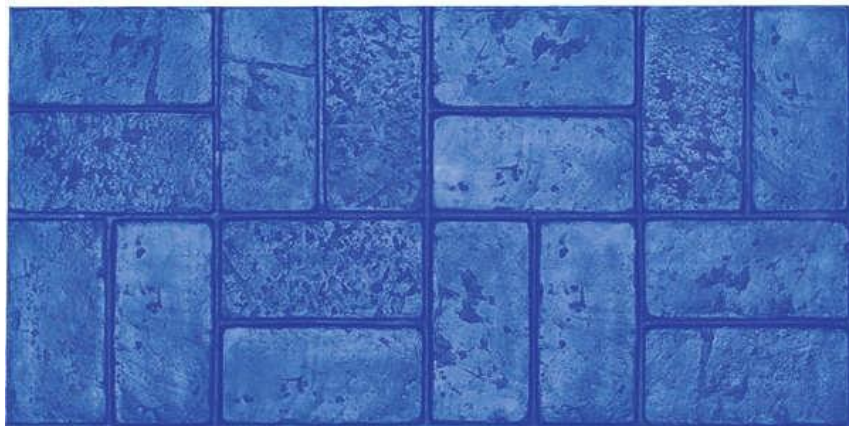
STAMP #: Basketweave

Manufacturer: Brickform

P/N: FM-5200

SIZE: 15.375" X 30.75" SET

OF: 1 + Floppy



STAMP #: Belgium Slate

Stamp Type: Seamless Skin

*Enshrouded with nature's crevices and veins, this pattern is a fine replication, making for an earthy look.*

Manufacturer: Proline

P/N: 4BE- 48" x 48" w/ handle

2BE- 20" x 20"

SET OF: 1



STAMP #: Castlestone

Manufacturer: Brickform

P/N: TM-1300

SIZE: 47.5" x 47.5"

SET OF: 2 (A & B) + Floppy



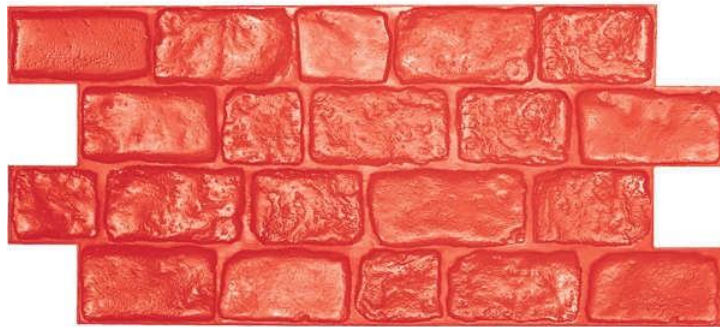
## STAMP #: Cheshire Cobble

*A traditional cobblestone pattern with smooth, ungrouted joints.*

Manufacturer: Brickform

P/N: FM-525 SIZE: 20.5" x 46"

SET OF: 1 + Floppy



STAMP #: Chiseled Slate

Stamp Type: SEAMLESS TEXTURE

Manufacturer: Brickform

P/N: FM-G4M2Y (4'X4')

FM-G2S2N (2'X2')

SET OF: 1



STAMP IS ACTUALLY SQUARE\*\*





**STAMP #: European Fan**

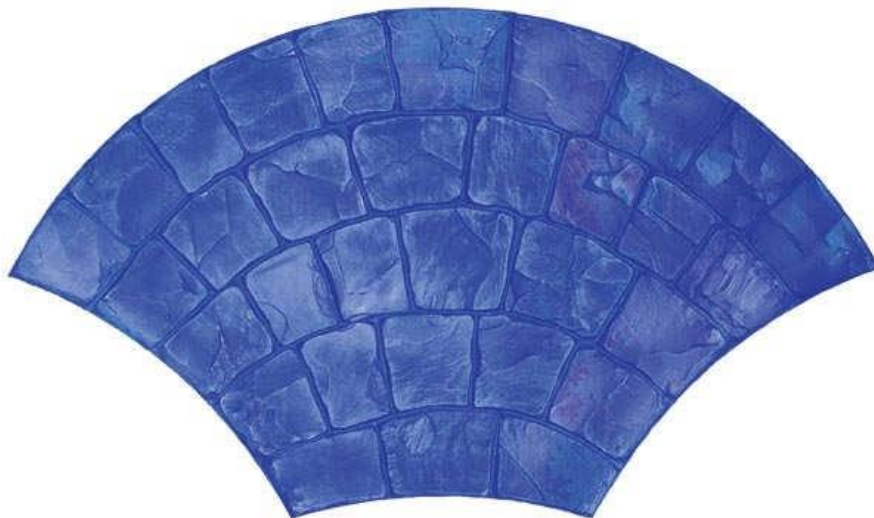
*An elegant European fan pattern, consisting of slightly curved rectangular slate stones.*

**Manufacturer: Brickform**

**P/N: FM-650**

**SIZE: 26" X 46"**

**SET OF: 1 + FLOPPY**



## STAMP: Flagstone

*These are flagstone with hand chiseled edges grouped in a random formation.*

Manufacturer: Brickform

P/N: TM-700

SIZE: 48" x 48"

SET OF: 2 (A & B) + Floppy



## STAMP #: Grand Ashlar

*A naturally laminated stone texture, split along parallel planes, hand-tooled to create a chipped, fragmented look.*

Manufacturer: Brickform

P/N: FM-3675

SIZE: 36" x 36"

SET OF: 3- RED BLUE YELLOW + FLOPPY



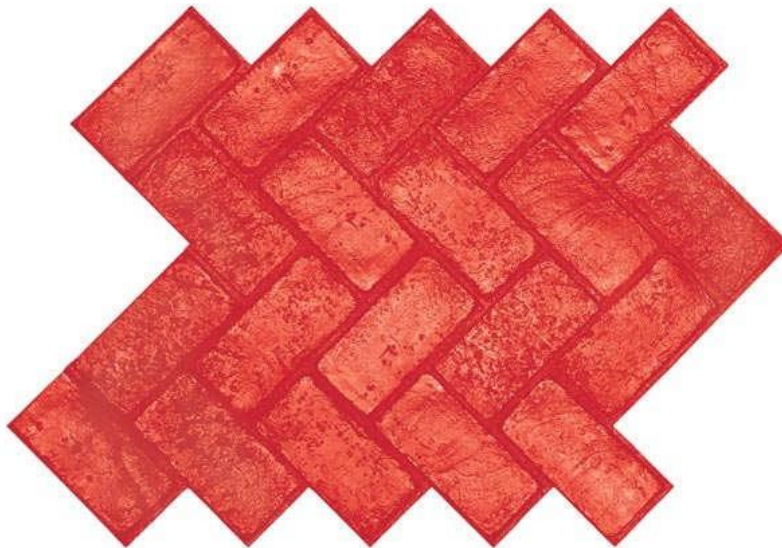
## STAMP: Herringbone Used Brick

*A weatherworn brick surface with an uneven texture and rounded broken edges.*

Manufacturer: Brickform

P/N: FM-5000 SIZE: 32" x 36"

SET OF: 1 + Floppy



STAMP #: Italian Slate

Stamp type: Seamless Skin

Manufacturer: Proline

P/N and Sizes: 4IS (48"x48"); 2ISF (24"x24")



## STAMP: Large Ashlar Cut Slate

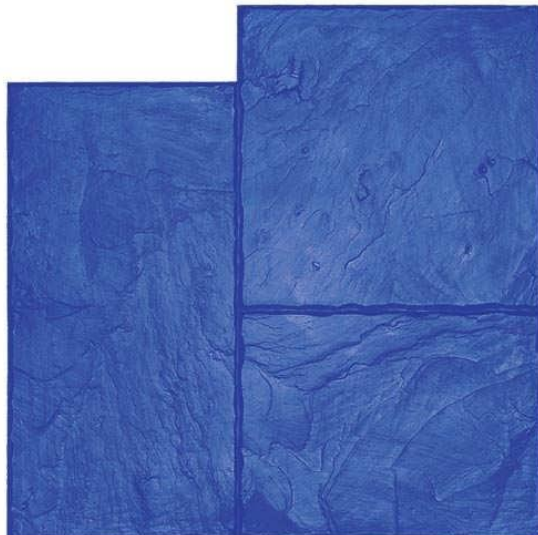
*Similar to Ashlar Cut Slate but the overall size is larger, with a softer texture.*

Manufacturer: Brickform

P/N: FM-3150

SIZE: 28" x 28"

SET OF: 3- Red, Yellow, Blue + Floppy



STAMP #: Limestone

Stamp Type: Seamless Skin

Manufacturer: Proline

P/N: 2LS (2"x2"), 4LS (4"x4")



## STAMP #: London Cobble

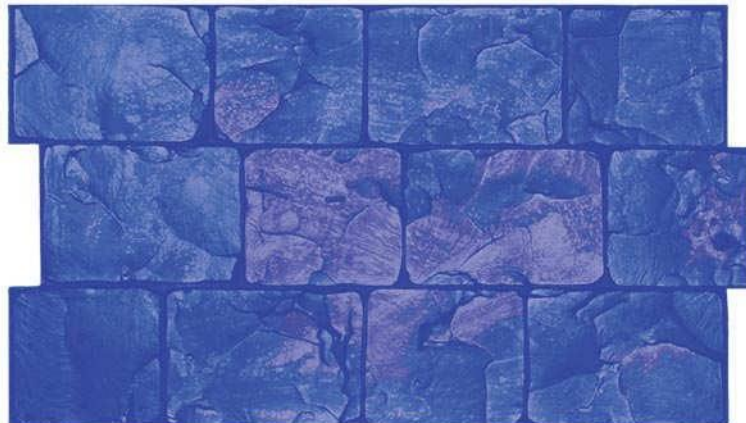
*A staggered pattern of cobblestone with smooth joints and rounded edges.*

Manufacturer: Brickform

P/N: FM-540

SIZE: 17" x 29.75"

SET OF: 1 + FLOPPY





STAMP #: Mexican Tile

Manufacturer: Brickform

P/N: FM-7000

SIZE: 23.75" x 35.75"

SET OF: 1



**STAMP #: Random Boardwalk (Wood plank WITH nail holes)**

*This pattern consists of 6" wood planks "ganged" together in a staggered pattern. Each stamp has five rows of 6" wide planks.*

**Manufacturer: Proline**

**P/N & SIZE: BW170 (30" x 72")**

**BW170F (30" X 72") FLOPPY**

**BW6 (ONE PLANK- 6" X 32") (used to be SKW6F)**

**SET OF: (3) BW170, (1) BW170F, (2) BW6**



STAMP #: Random Stone Standard

*Heavily textured random fieldstones.*

Manufacturer: Brickform

P/N: FM-700 SIZE: 29.125" x 29.125"

SET OF: (3) RED, YELLOW, BLUE

\*ALSO FLOPPY- (3) RED, YELLOW, BLUE



## STAMP #: RECLAIMED TIMBER (12" wide planks)

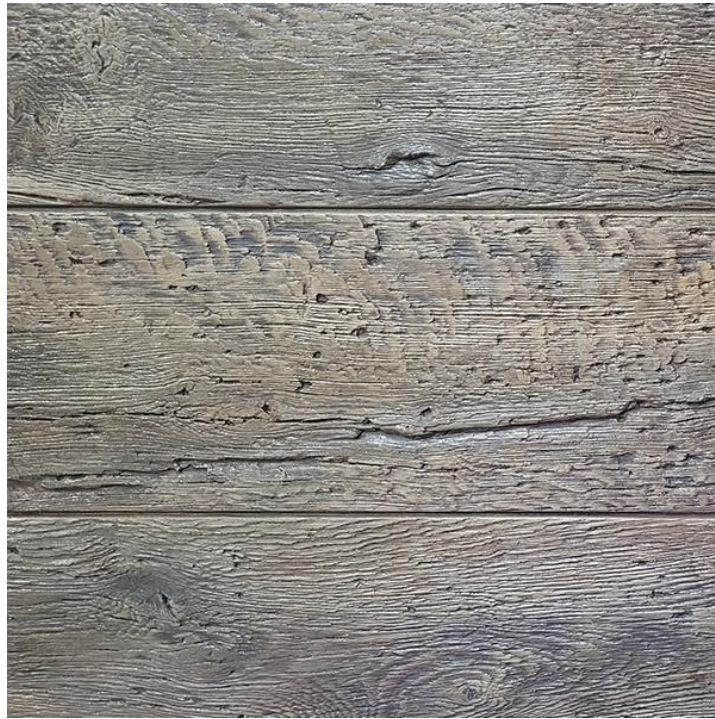
*Hundreds of years in the making, lumber from old barns, factories and warehouses is transformed into Reclaimed Timber. Wood texture with scratches, nail holes, bolt and knife marks.*

Manufacturer: Proline P/N: BW1237 & BW1275

Size: 12"x37" & 12"x75"

SET OF 6-

- 37" A & B
- 37" A & B FLEX
- 75" A & B



**STAMP #: RENAISSANCE SLATE**

*A natural stone surface with a light sandstone that includes various veins, typically running in a similar direction*

**Manufacturer: Brickform P/N:FM-F4M2Y**

**Stamp type: Seamless Texture Mat**

**Size:48 x 48**



## STAMP #: Roman Slate

*A slate stone texture that utilizes dips, ridges, and veins, to create a continuous changing texture across the entire surface.*

Stamp Type: SEAMLESS TEXTURE

Manufacturer: Brickform

P/N: FM-H2M2N- 2'x2'

FM-H4M2Y- 4'X4'

SET OF: 1 SKIN



\*\*\*\*\*STAMP IS ACTUALLY SQUARE\*\*\*\*\*



## STAMP #: Roughstone

*A natural stone texture characterized by a continuous coarse surface with several distinguishing veins.*

Manufacturer: Brickform

Stamp Type: Texture Mat

SIZES & P/N: 48" x 48" with handle- P/N FM-C4M2Y

24" x 24"- P/N FM-C2S2N & 12" X 12"- P/N FM-C1S2N



\*\*\*\*\*STAMP IS ACTUALLY SQUARE\*\*\*\*\*



STAMP: Running Bond Used Brick

Type: Texture Mat & Floppy

Manufacturer: Brickform

Mat P/N: FM-5100B; Floppy P/N: FM-5100FB

SIZE: 16" x 36.5"





STAMP #: Sanded Slate

Stamp type: Stamp

Manufacturer: Brickform

P/N'S & SIZES: FM-E4M2Y: 4' X 4' W/HANDLE

FM-E2M2N: 2' X 2'

SKIN: FM-E2S2N: 2' X 2'



## STAMP #: Slate

*Slate squares in two rows, with un-grouted joints.*

Manufacturer: Brickform

P/N: TM-300

Stamp is 32" x 48" (individual tiles are 16"x16")

SET OF: 1



STAMP #: Smooth Slate

Manufacturer: Brickform P/N: FM-O4M2Y

Stamp Type: Seamless Texture

SIZE: 48X48



## STAMP #: Stones of Athens

*The ancient city of Athens, Greece, crowned with marble temples such as the Parthenon and the Acropolis, stands the test of time with millions of visitors walking the time old streets of Athens. A variety of different stones helped the Team create Athens Stone, one of most intricate tools using over 14 combined textures: Limestone, Marble, and Granite are all used next to each other detailing the fine craftsmanship of ancient Greece.*

Manufacturer: Brickform

Stamp P/N & Size: PD-400- 47.75" x 23.875"

Matching Skins P/N & Size: PD-410: 1"x1"; PD-405: 2"x2"

Floppy P/N & Size- PD400F- 47.75" x 23.875"

SET OF: (8) stamps + (3) 2x2 skins + (1) 1x1 skin + (1) floppy



PD-405



PD-400

STAMP #: Used Brick Border

Stamp Type: Border (corner also available)

Manufacturer: Brickform

Stamp P/N: FM-5300 SIZE: 8.5" x 32.25"

Corner P/N: FM-5400Y SIZE: 8.5" x 8.5"

SET OF: 2 stamps + corner



Border



Corner

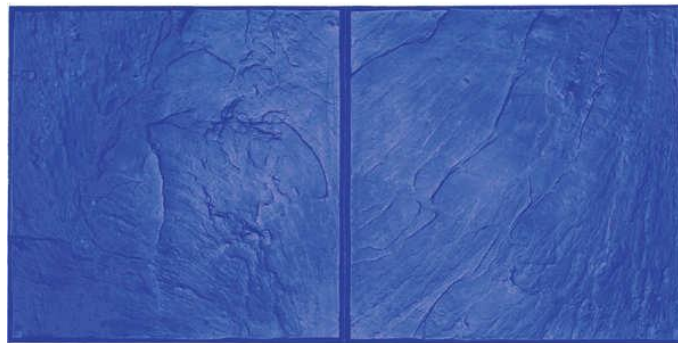
**STAMP #: Walkway Slate**

*Square and rectangular slate tiles, of various sizes, set in parallel rows (Stone sizes vary).*

**Manufacturer: Brickform**

**P/N: FM-3400 SIZE: 18" x 36"**

**SET OF: 3- RED BLUE YELLOW + FLOPPY**



STAMP #: Wood Plank (6" planks)

Manufacturer: Butterfield

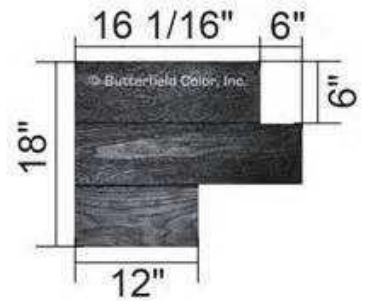
P/N: BST7370BL/BK (Rigid)/ BST7371 (Flexible)/ BST7372TS (texture skin)

SET OF: (3) Black Rigid, (3) Blue Rigid, (1) 'X' Flex, (1) 'Y' Flex; (1) Single Plank Flex, (1) Skin



Rigid: (BST7370BL/BK)

Flex: (BST7370XFL/YFL)



Single Plank: (BST7371FL/ BST7372TS)



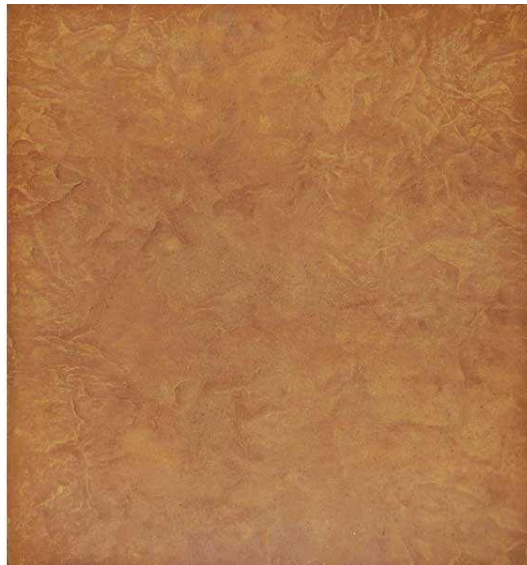
STAMP #: Yucatan Seamless

Manufacturer: Brickform

Stamp type: Texture Mat

P/N: FM-J & FM-J4X4

SET OF: 1





# BILLY BANGER HAND TAMPER

Manufacturer: Proline

BBANGER



# TAMPER

Manufacturer: Brickform

12" x 12" Aluminum handle- Part # FP-400



# TOUCH-UP ROLLERS

Manufacturer: Brickform

FM-6510-1/4" round



FM-6520- 3/16" flat



FM-6530- 3/8" flat



FM-6540: 3/8" sanded



FM-6550- 1/2" wedge



FM-6560- 1/2" flat



FM-6570- 1/2" sanded



# TOUCH-UP ROLLERS

Manufacturer: Proline

WHE- Hammered Edge

